

Can you do the following?

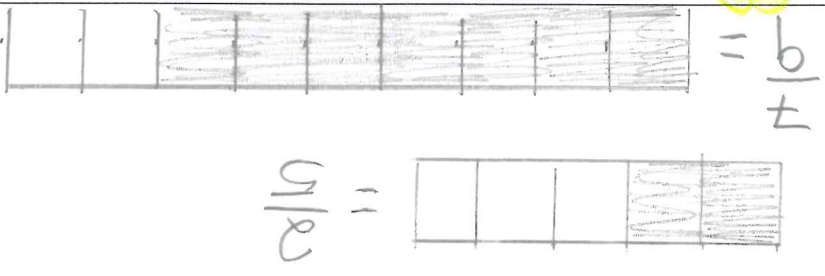
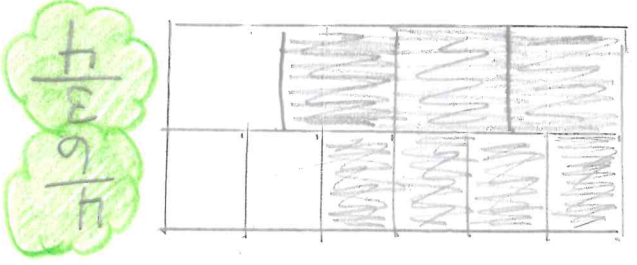
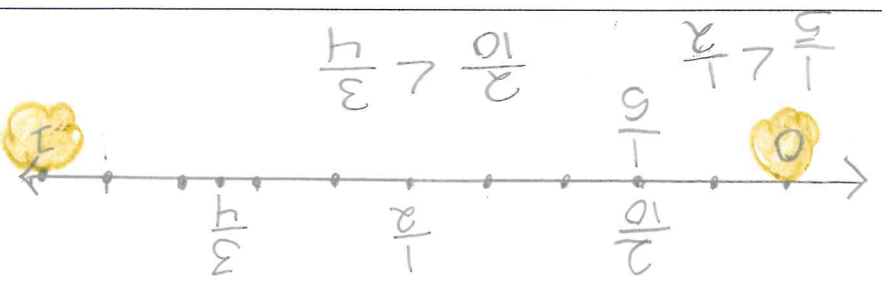
Can you compare fractions/decimals using a number line?

Can you compare fractions/decimals using fraction strips, bars or models?

Can you draw fraction bars to show fractions?

Can you convert fractions to decimals to percent (and the reverse)?

Can you find the lowest common denominator for two or more fractions?



$5 \div 6 = 0.8\bar{3}$
 $\times 100 = 83.\bar{3}\%$
 65%
 $\leftarrow \frac{65}{100} = \frac{13}{20}$

$\frac{7}{8}, \frac{8}{21}, \frac{9}{16}, \frac{4}{24}$
 $\times 3, \times 3, \times 4, \times 4$
 $\frac{21}{24}, \frac{24}{24}, \frac{27}{24}, \frac{4}{24}$
 $\text{LCD} = 24$